



Ukulelele
Safari

November 2025

What is an Ukulele Safari

Welcome to an extraordinary journey where the enchanting rhythms of **Africa** meet the sweet sound of the **ukulele**.

This is not just a safari; it is a melody of experiences, a unique fusion of adventure, culture, and the **joy of giving**.

As you traverse the breathtaking landscapes of Kenya, from the vibrant city of Nairobi to the serene expanses of the Lumo Conservancy, your heart will be touched not only by the majestic wildlife but also by the warmth of the local communities.

But the most harmonious note of this journey is the opportunity to give back.

During a special visit to local schools, you will share the joy of music with children spending time creating melodies together.

This moment of cultural exchange and kindness will resonate long after your journey ends, leaving a lasting impact on the community and indelible memories in your heart. :-)

Each evening, inspired by the day's events, we'll gather to compose and play music that captures the essence of our experiences. From the rhythmic beats reminiscent of galloping zebras to the gentle melodies echoing birdsong at dawn, our musical creations will form a unique soundtrack to our adventure.





ITINERARY IN BRIEF



DAY 1 NAIROBI
4TH NOVEMBER Arrive Nairobi, and transfer to your hotel

DAY 2 NAIROBI
5TH NOVEMBER Nairobi National Park

DAY 3 LUMO CONSERVANCY
6TH NOVEMBER Departure to Lumo by train

DAY 4 LUMO CONSERVANCY
7TH NOVEMBER Day with the Bura Drummers

DAY 5 LUMO CONSERVANCY
8TH NOVEMBER Visit Latika Primary School

DAY 6 NAIROBI
9TH NOVEMBER Transfer to train station and departure to Nairobi

DAY 7 SAMBURU
10TH NOVEMBER Departure to Samburu by road

DAY 8 SAMBURU
11TH NOVEMBER Game drive in the Reserve

DAY 9 SAMBURU
12TH NOVEMBER Game drive in the Reserve

DAY 10 NAIROBI
13TH NOVEMBER Drive to Nairobi and drop off to International Airport



WILDLIFE MUSIC & CULTURE

4TH NOVEMBER 2025 - NAIROBI

Your safari adventure begins with a seamless pickup from the airport or your hotel by our guide and transfer to your hotel in Nairobi where you will meet Michela for a welcome and brief about the Safari.

Depending on your arrival time we can organize extra activities in Nairobi like visit to the **Giraffe Center** or the **David Sheldrick Wildlife Orphanage** (not included)

Overnight Nairobi Bed and Breakfast

5TH NOVEMBER 2025 - NAIROBI

After breakfast at your hotel, we'll venture on an exciting trip to Nairobi National Park, a unique urban oasis that's home to an incredible array of wildlife.

Get ready to spot majestic lions, playful hyenas, and a variety of gazelles. But that's not all! You'll also have the rare opportunity to witness the magnificent black rhinoceroses, creatures that are critically endangered.

Our afternoon plans will be tailored to the arrival times of the rest of our group, but one thing's for sure:

we'll keep the fun and music flowing with lively ukulele sessions!

Overnight Nairobi Bed and Breakfast

6TH NOVEMBER 2025 - LUMO CONSERVANCY

6:30 am Pick up from your hotel after an early breakfast and embark on a scenic 4-hour train journey to the town of Voi.

Enjoy lunch at Cheetah Tented Camp, then experience your first taste of Africa with an afternoon game drive through the conservancy. Spot wildlife in their natural habitat as your guide shares insights.

As the sun sets, gather around the campfire for an ukulele jam session, creating harmonious melodies that blend with the sounds of the African night. Relish a delicious dinner surrounded by the tranquil wilderness.

Overnight Cheetah Tented Camp Full board+Game drives

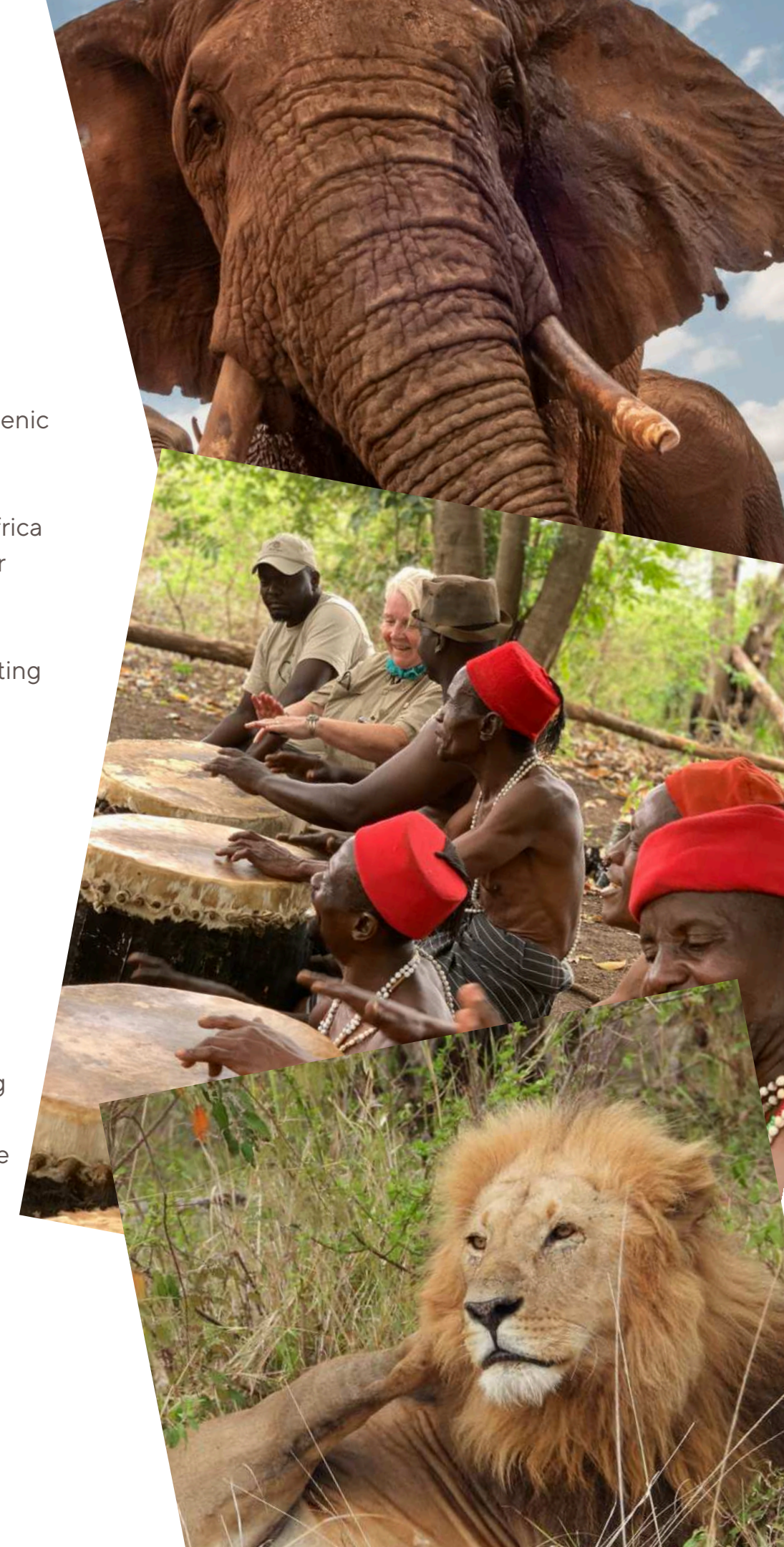
7TH NOVEMBER 2025 - LUMO CONSERVANCY

After breakfast at the camp, departure for Bura, where we will meet the famous Taita percussionists.

Mr. Mwamburi and his team will show us a typical day in their village, sharing their traditions of cooking, using medicinal herbs, and transforming sisal leaves into fibre. Their enchanting drumming will fill the air as they showcase their cultural heritage.

In the afternoon, we'll go on a safari, exploring the wilderness and spotting wildlife in the conservancy. We'll return to the camp for an aperitif, accompanied by the melodic sounds of our ukuleles.

Overnight Cheetah Tented Camp Full Board+Game drives





8TH NOVEMBER 2025 - LUMO CONSERVANCY

Wake up early for a sunrise safari, Enjoy a picnic breakfast in the midst of this beautiful setting, followed by a visit to the Latika Primary School. Here, you can interact with the young students and participate in a ukulele jam session/workshop.

Lunch at the camp and another safari in the afternoon.

Upon returning to the camp, we will have fun playing the "Ukulele Safari Board Game", a game created to stimulate musical creativity, learn and have fun. Night game drive after Dinner.

Overnight Cheetah Tented Camp Full Board+Game drives

9TH NOVEMBER 2025 - NAIROBI

After breakfast, we'll depart for Nairobi. Those concluding their safari today will be transferred directly to the international airport. For those continuing their journey to Samburu, we'll drop you off at your Nairobi hotel.

Here, you can recharge and prepare for the next leg of your thrilling adventure.

Overnight Nairobi Bed and Breakfast

NOW IT'S ALL ABOUT WILDLIFE...& UKULELE!



10TH NOVEMBER 2025 SAMBURU

Enjoy an early breakfast at the hotel before meeting your guide for a scenic drive to Samburu National Reserve. Enjoy a delicious lunch at the lodge and spend the afternoon on an exciting game drive in the reserve. Rest and recharge for the night at Samburu Lodge. FB+GD



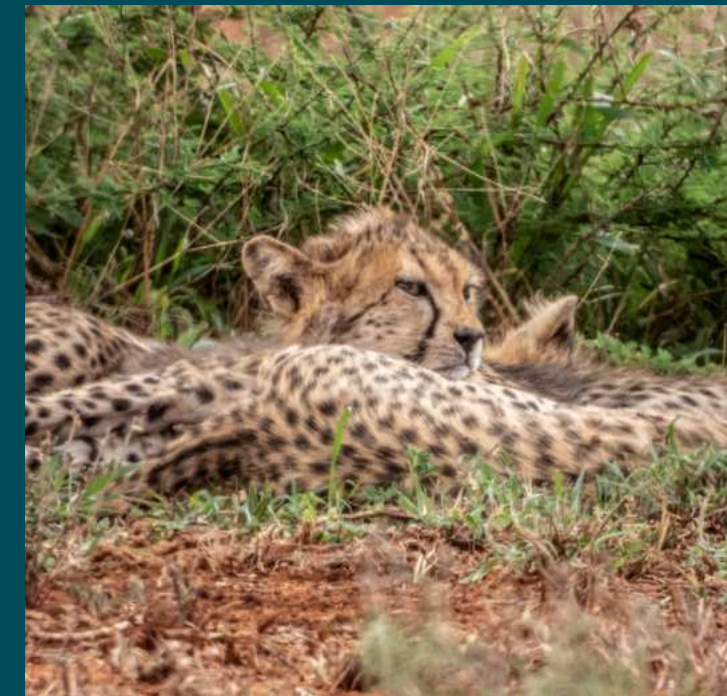
11TH NOVEMBER 2025 SAMBURU

Spend the entire day researching wildlife within the reserve, or relax and unwind by the swimming pool or at the lodge's spa. As the sun sets, join us for a delightful ukulele session on the sundowner deck. Overnight at Samburu Lodge. FB+GD



12TH NOVEMBER 2025 SAMBURU

In addition to the standard game drives, we have the unique opportunity to explore the nearby photographic hide or go on a guided bush walk (not included). Ukulele jams during the day. Overnight at Samburu Lodge. FB+GD



13TH NOVEMBER 2025 NAIROBI

Enjoy a leisurely breakfast at the lodge before departing for Nairobi. Upon arrival, we'll drop you off at Jomo Kenyatta International Airport for your onward journey

NAIROBI NATIONAL PARK

Nairobi National Park is a national park located approximately 7 km (4.3 mi) south of Nairobi, Kenya. Established in 1946, it covers an area of 45 square miles (117 square km) and is unique for being situated close to a major city. The park is home to a diverse range of wildlife, including the highest density of black rhinos in Kenya, making it a significant rhino sanctuary. It is fenced on three sides and serves as an important conservation area amidst urban development.



Some of the notable animals you can find in the park include:

Black Rhinos, The park is famous for its population of black rhinos, making it one of the best places to see these endangered animals.

Lions, Giraffes - The park is home to the Rothschild's giraffe, which is distinguishable by its lighter color and is one of the rarest giraffe subspecies.

Zebras, Buffaloes, Cheetahs - The open savannah areas provide a habitat for cheetahs, which can occasionally be seen hunting.

Numerous Antelope Species - Including impalas, Thompson's gazelles, and waterbucks.

Hippos - Found in the park's rivers and wetlands.

Various Bird Species - Over 400 species of birds can be observed, making it a haven for bird watchers.



Ukulele
Safari

CHEETAH TENTED CAMP

Cheetah Tented Camp offers an authentic safari experience within Kenya's thriving wilderness. The camp has six twin tents and two family tents, each with king size beds and an en-suite bathroom, along with a private verandah overlooking the breathtaking conservancy views of Lumo Conservancy.

The shared mess area serves as a communal space for dining and relaxation, strategically positioned to capture stunning panoramic sunsets. The camp's talented kitchen team prepares delightful home-cooked meals to suit all dietary needs.

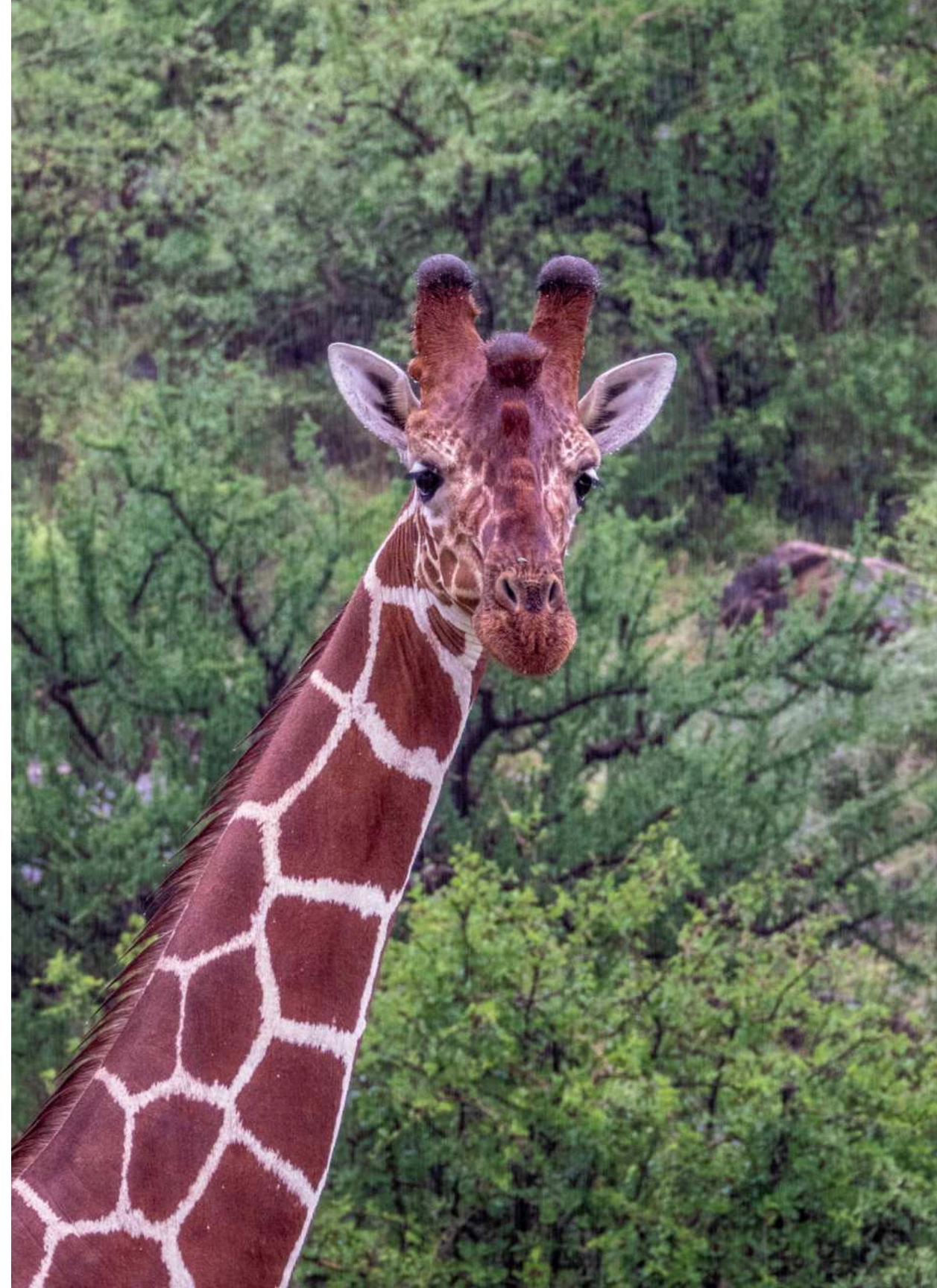


[CHECK THE GALLERY](#)

SAMBURU NATIONAL RESERVE

Samburu National Reserve is a captivating sanctuary renowned for its unique and diverse ecosystem. It's particularly famous for hosting the Samburu Special Five, a group of distinctive animals found only in the northern regions of Kenya.

The Samburu Special Five includes: Reticulated giraffe, Beisa oryx, Grévy's zebra, the Somali ostrich and the Gerenuk.



**THE SAMBURU
SPECIAL FIVE
INCLUDES:
RETICULATED
GIRAFFE, BEISA
ORYX, GRÉVY'S
ZEBRA, THE
SOMALI OSTRICH
AND THE
GERENUK.**



Ukulele
Safari

HOW MUCH DOES IT COST?

This year, we've decided to offer a flexible itinerary with two distinct parts.
You can choose to participate in both or select just one:

Part 1

Is a blend of wildlife, cultural experiences, and music.

From day 1 to day 6
2 Nights Nairobi
3 nights Lumo Conservancy

USD 2.690
per person Sharing

Part 2

Focus on nature, wildlife, and, of course, our beloved ukuleles.

From Day 7 to day 13
1 Night Nairobi
3 Nights Samburu

USD 1.990
per person Sharing

IF YOU BOOK BOTH PART USD. 4600 PER PERSON SHARING

Get in touch for Single, family and group prices





INCLUDED

- Arrival and departure transfer, all the transfers according to the itinerary.
- Well experienced, English-speaking driver/guides
- Well experienced Italian and English speaker Tour leader
- 24hr assistance in Kenya
- Evacuation Insurance to / from Nairobi by air (AMREF)

PART 1 NAIROBI & LUMO

- Train from Nairobi/Voi/Nairobi
- 2 nights Accommodation in Nairobi on Bed and Breakfast basis
- 3 nights Accommodation at Cheetah Tented Camp
- Game Drives in Nairobi National Park and Lumo Conservancy
- Breakfast, Lunch and Dinner during the safari
- Filtered water, coffee and tea
- Park entrance Fee at Nairobi National Park, Lumo Conservancy
- Visit to Bura Drummers and Latika Primary School

PART 2 SAMBURU

- 1 night Accommodation in Nairobi on Bed and Breakfast Basis
- 3 nights Accommodation at Samburu Lodge
- Breakfast, Lunch and Dinner during the safari
- Park entrance Fee at Samburu National Reserve
- Game drives





EXCLUDED

- International flights to / from Kenya & Visa fees
- Meals in Nairobi
- Drinks
- Telephone calls & Laundry
- SPA
- Tips for lodge / camp staff & driver/guide
- Extra activities/excursions
- Any personal item and everything else not indicated in the inclusions
- Change of itinerary

We invite our participants to consider a travel insurance



KENYA UKULELE PROJECT

In Kenya, numerous schools provide music education despite lacking qualified teachers and instruments.

The Kenya Ukulele Project is a wonderful initiative that aims to provide music education and ukuleles to underprivileged children in Kenyan schools.

We have made a pledge to bring happiness to these children. On our upcoming safari, we will have the opportunity to visit and engage with the kids who benefited from our previous safari's donations.



We also sponsor ukulele lessons for Kenyan music teachers, funded by sales of the handcrafted Tembo Ukulele, our online shop and fundraiser. So far we have donated **105 UKULELES in 6 different schools.**

MEET YOUR HOST



Michela

I've been in the Kenyan Safari industry since 2007, working as a guide, lodge manager, tour consultant and marketer. I play Ukulele since 2019 and got inspired by teachers like James Hill, Boris Mogilevsky, Sammy Turton and Bernadette Plazola.

Join me on this musical adventure as I showcase the beauty of Kenya and the transformative power of music.

Together, we'll explore this incredible country, sharing its wonders with the world while celebrating the magic of the ukulele.

It's a perfect blend of my two greatest passions: wildlife and music!



GET IN TOUCH

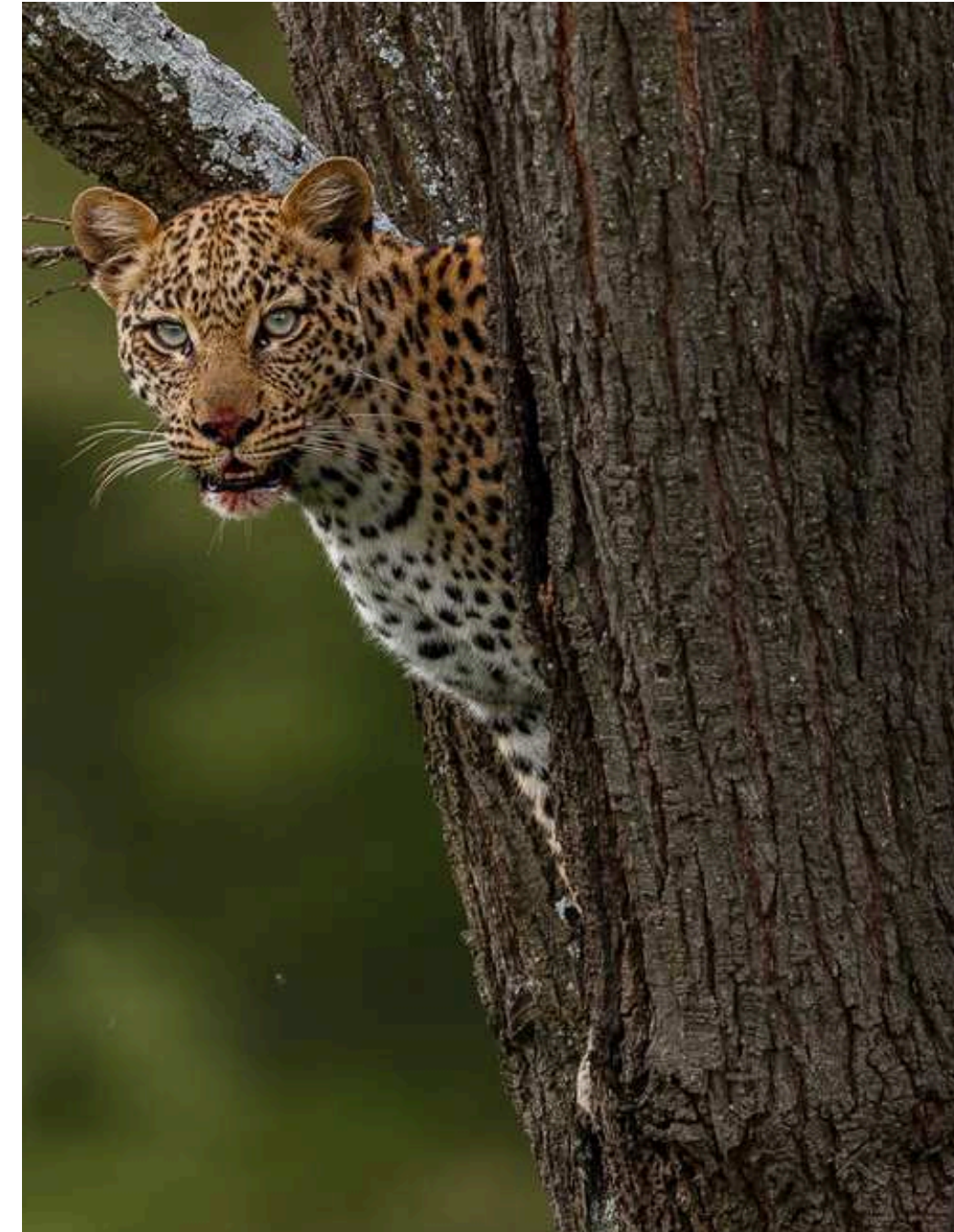
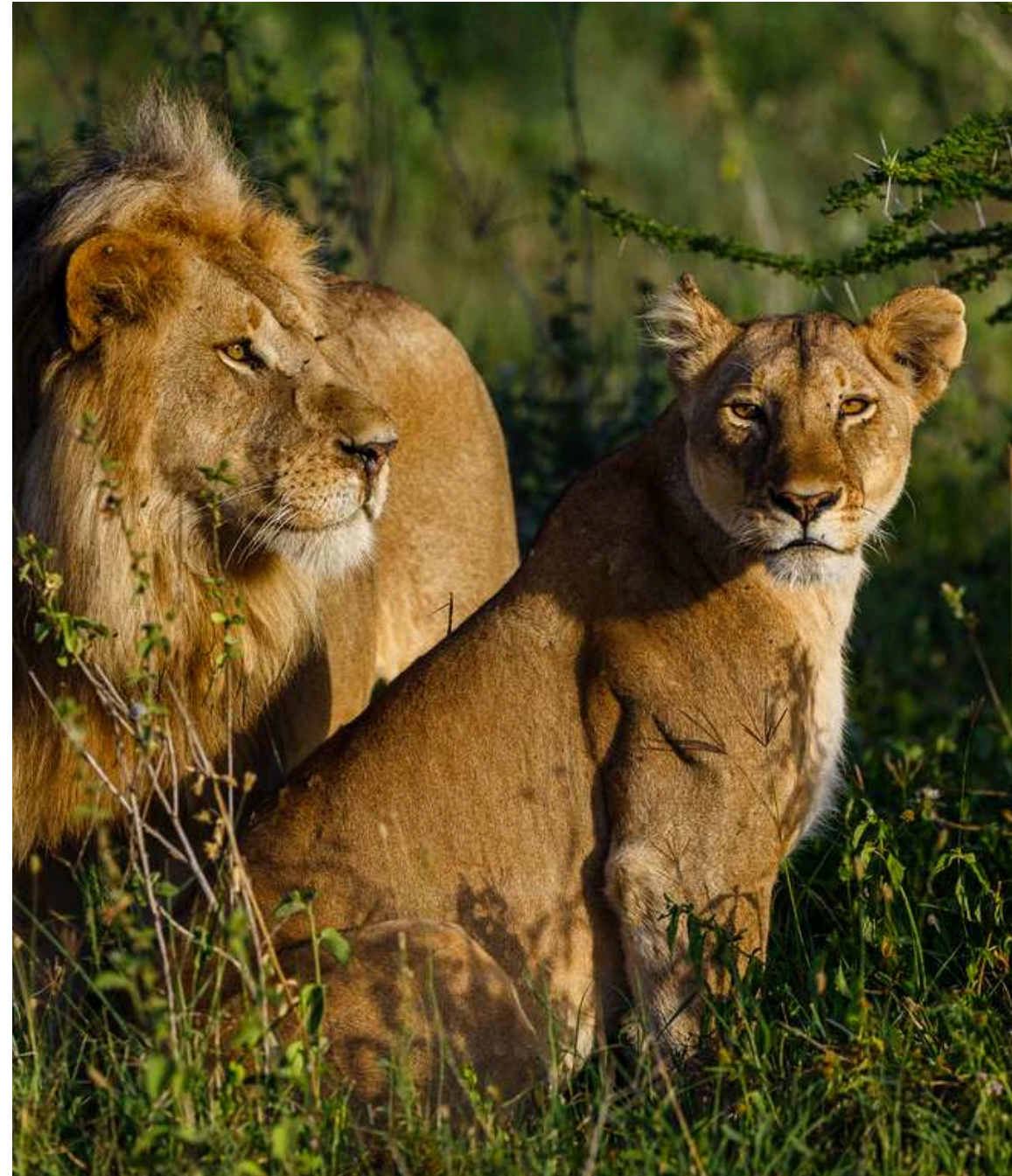
 +254 728 362 451

 www.ukulelesafari.co.ke

 michela@ukulelesafari.co.ke

 Gatto Nero Drive - Nairobi

 IG: ukulelesafari



Ukulele Safari is a product of [Sunworld Safaris](#)
Cheetah tented camp & Samburu Lodge are part of [Soroi Collection](#)